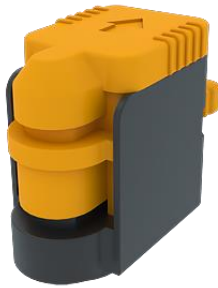


## M.2 Board Latch

- Two layers each for one SSD, meets special SSD requirement
- Two-in-one design with tool-less operation
- Quick assembly for time-saving
- Suitable for M.2 cards of different lengths

## Double M.2 Board Latch Patented.



### Material and Finish

**Cover/Layer Cover :**

Plastic.

**Rivet/Spring :**

300 Series Stainless Steel, Natural Finish.

**Base :**

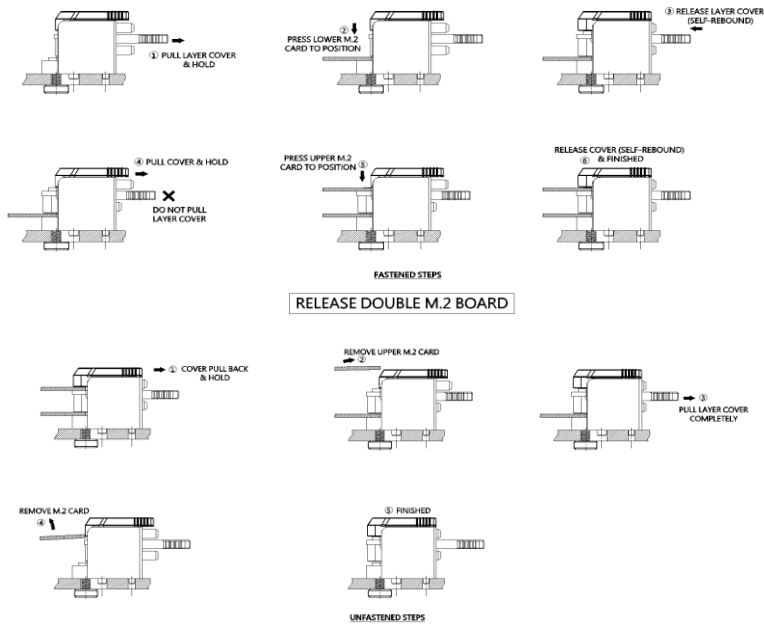
Plastic.

**Nut:**

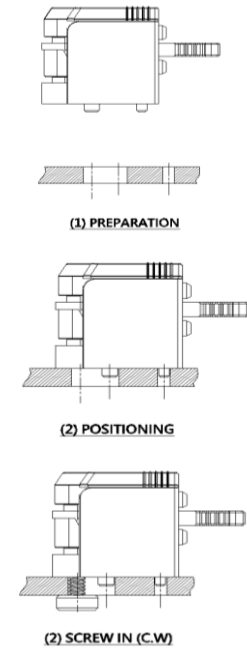
Brass, Natural Finish.

## Installation Style

### INSTALL DOUBLE M.2 BOARD (METHOD 1)



## Panel Preparation



## Color Options

Color Options

