

## CAPTIVE SCREW

Designed for hand operation

Fast positioning device that does not require extra tools

Color management for plastic material is available

Plastic knob can isolate ambient heat source and static

## Captive Screw- Square Type Patented.



### Material and Finish

#### Knob:

6000 Series Aluminum, Plastic

#### Screw :

Carbon Steel, Zinc Finish

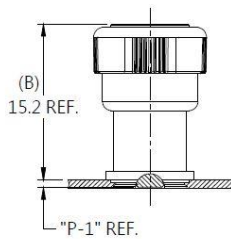
#### Spring :

300 Series Stainless Steel, Natural Finish

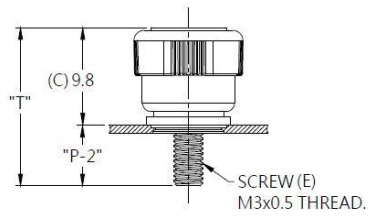
#### Ferrule :

Carbon Steel, Zinc Finish

### Installation



UNFASTENED



FASTENED

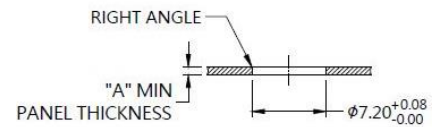
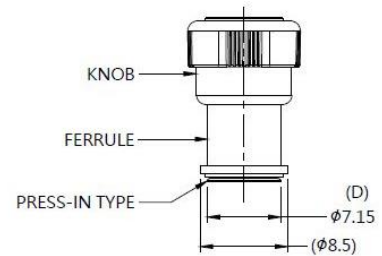
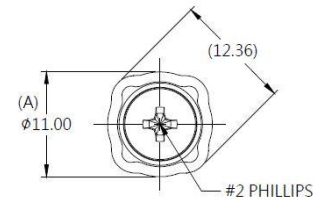


### Color Options

Color Options



### Panel Preparation



### Dimensions (mm)

SCREW LENGTH "T"	SCREW PROJECTION		PANEL THICKNESS		DIMENSINOS	
	"P-1"	"P-2"	"A" MIN	"A" MAX	" L "	" B "
15.9	0.7	6.1	0.8	~		