

## CAPTIVE SCREW

- Low profile design for hand operation
- Will be fastened on the board and not loosen
- Color management is available as required by customers
- Plastic can prevent scalding and electricity, and have a better operational feeling

## Captive Screw- Low Profile Patented.



### Material and Finish

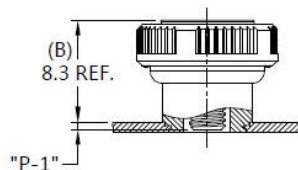
**Knob:**  
6000 Series Aluminum, Plastic

**Screw :**  
Carbon Steel, Zinc Finish

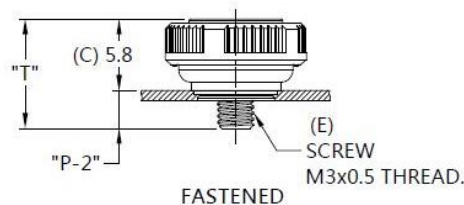
**Spring :**  
300 Series Stainless Steel, Natural Finish

**Ferrule :**  
Carbon Steel, Zinc Finish

### Installation

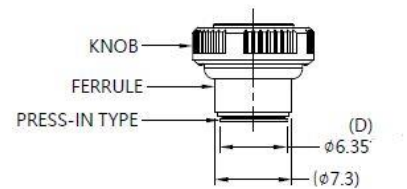
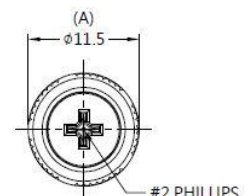


UNFASTENED



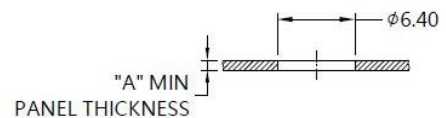
FASTENED

### Panel Preparation



### Color Options

Color Options



### Dimensions (mm)

SCREW LENGTH "T"	SCREW PROJECTION		PANEL THICKNESS		DIMENSINOS	
	"P-1"	"P-2"	"A" MIN	"A" MAX	" L "	" B "
8.9	0.6	3.1	0.8	~	~	~