

QUARTER TURN

- Water drop head type design makes the operation intuitive and friendly
- Turn 1/4 to unlock, and simply press to lock, saving time and effort
- High stability and high strength mechanism design
- Special spring force structure strengthens the force between two boards

Auto Lock Patented.



Material and Finish

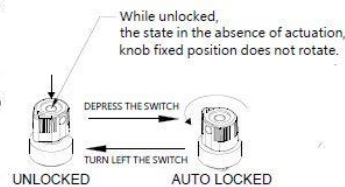
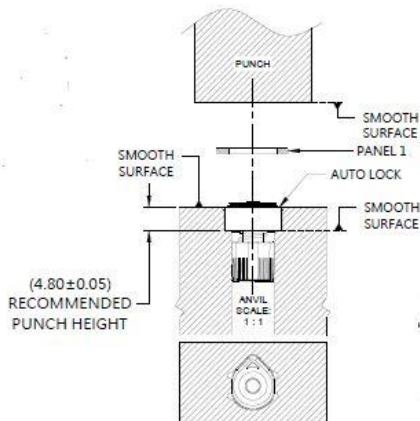
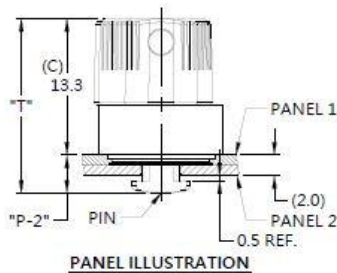
Switch :
Plastic

Rivet:
300 Series Stainless Steel, Natural Finish

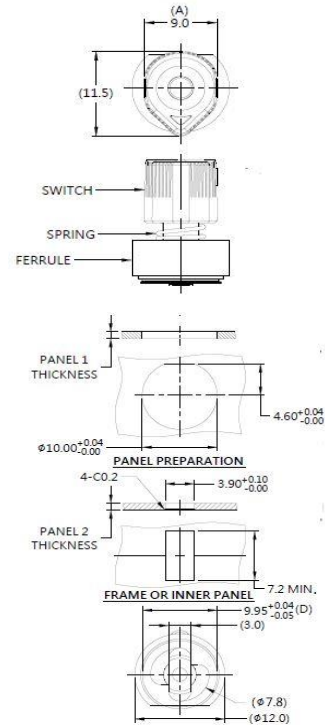
Pin :
300 Series Stainless Steel, Natural Finish

Spring/Ferrule :
300 Series Stainless Steel, Natural Finish

Installation



Panel Preparation



Dimensions (mm)

| LENGTH "T" | PROJECTION | | PANEL THICKNESS | | DIMENSIONS | |
|---------------|------------|-------|-----------------|---------|------------|-------|
| | "P-1" | "P-2" | PANEL 1 | PANEL 2 | " L " | " B " |
| 17.0 | 1.3 | 3.7 | 1.0 | 1.0 | ~ | ~ |

QUARTER TURN

- Water drop head type design makes the operation intuitive and friendly
- Turn 1/4 to unlock, and simply press to lock, saving time and effort
- High stability and high strength mechanism design
- Special spring force structure strengthens the force between two boards

Auto Lock- R Patented.



Material and Finish

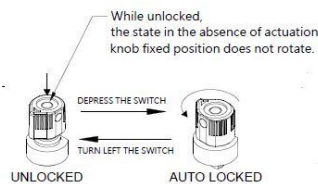
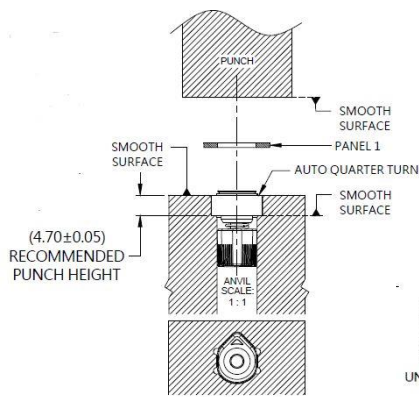
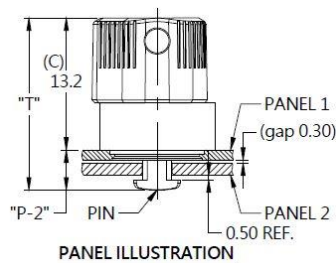
Switch :
Plastic

Rivet:
300 Series Stainless Steel, Natural Finish

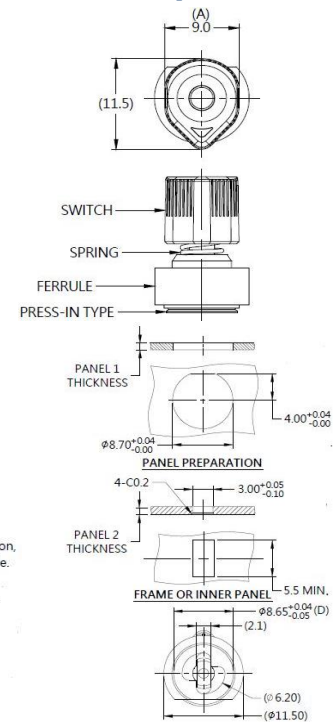
Pin :
300 Series Stainless Steel, Natural Finish

Spring/Ferrule :
300 Series Stainless Steel, Natural Finish

Installation



Panel Preparation



Dimensions (mm)

| LENGTH "T" | PROJECTION | | PANEL THICKNESS | | DIMENSIONS | |
|---------------|------------|-------|-----------------|---------|------------|-------|
| | "P-1" | "P-2" | PANEL 1 | PANEL 2 | " L " | " B " |
| 17.0 | 1.3 | 3.7 | 1.0 | 1.0 | ~ | ~ |

QUARTER TURN

- Water drop head type design makes the operation intuitive and friendly
- Turn 1/4 to unlock, and simply press to lock, saving time and effort
- High stability and high strength mechanism design
- Special spring force structure strengthens the force between two boards

Auto Lock- L Patented.



Material and Finish

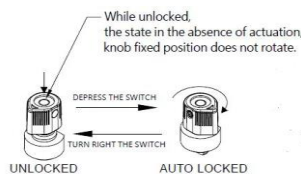
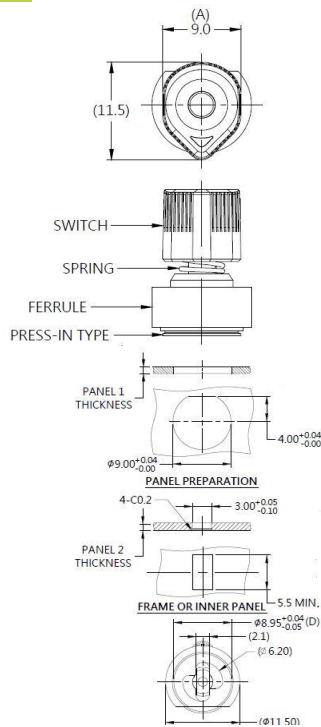
Switch :
Plastic

Rivet:
300 Series Stainless Steel, Natural Finish

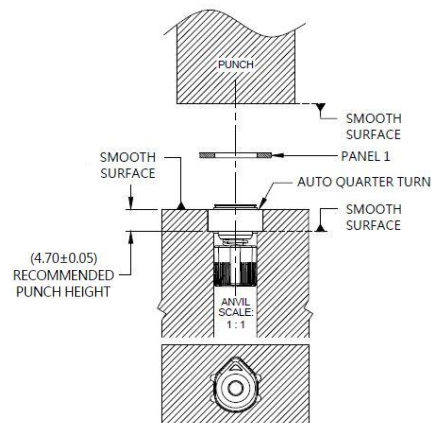
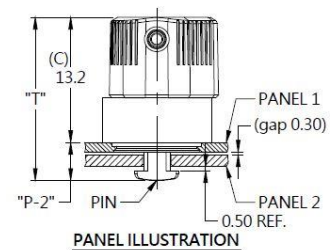
Pin :
300 Series Stainless Steel, Natural Finish

Spring/Ferrule :
300 Series Stainless Steel, Natural Finish

Installation



Panel Preparation



Dimensions (mm)

| LENGTH "T" | PROJECTION | | PANEL THICKNESS | | DIMENSIONS | |
|---------------|------------|-------|-----------------|---------|------------|-------|
| | "P-1" | "P-2" | PANEL 1 | PANEL 2 | " L " | " B " |
| 17.2 | 1.0 | 4.0 | 1.0 | 1.2 | ~ | ~ |

QUARTER TURN

- Water drop head type design makes the operation intuitive and friendly
- Turn 1/4 to unlock, and simply press to lock, saving time and effort
- High stability and high strength mechanism design
- Special spring force structure strengthens the force between two boards

Auto Lock Patented.



Material and Finish

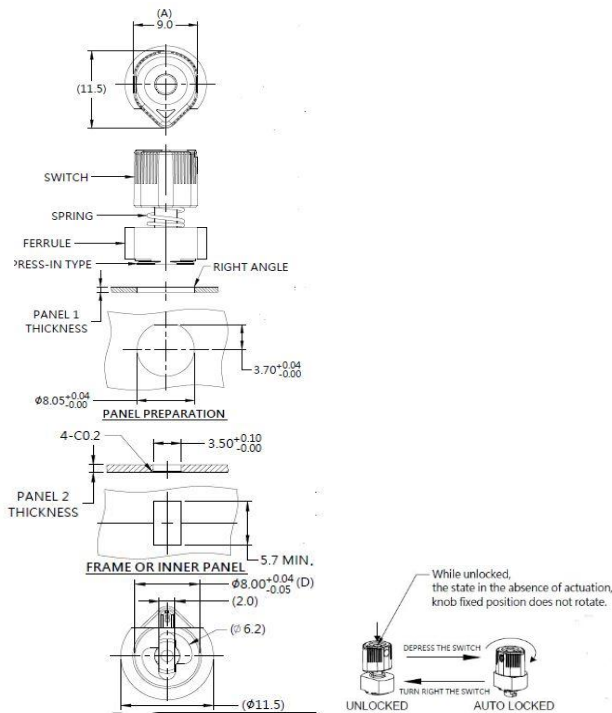
Switch :
Plastic

Rivet:
300 Series Stainless Steel, Natural Finish

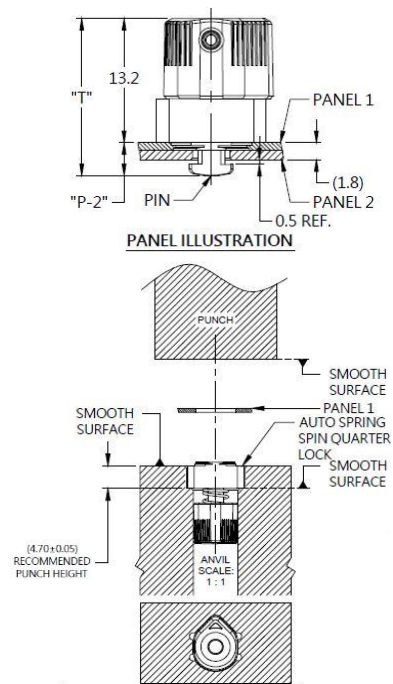
Pin :
300 Series Stainless Steel, Natural Finish

Spring/Ferrule :
300 Series Stainless Steel, Natural Finish

Installation



Panel Preparation



Dimensions (mm)

| LENGTH "T" | PROJECTION | | PANEL THICKNESS | | DIMENSIONS | |
|---------------|------------|-------|-----------------|---------|------------|-------|
| | "P-1" | "P-2" | PANEL 1 | PANEL 2 | " L " | " B " |
| 16.7 | 0.5 | 3.5 | 0.8 | 1.0 | ~ | ~ |

QUARTER-TURN SERIES

- Press to automatic lock panels achieving best working efficiency
- Strong spring force offers automatic locking position function
- Auto QT to lock / unlock two panels, quick release structure
- Easy to operate lock mode
- Effort saving, time efficient

AUTO-LOCK QUARTER-TURN II (half-wing type) Patented.



Material and Finish

SWITCH:

PLASTIC, PANTONE: BLACK.

RIVET:

300 SERIES STAINLESS STEEL, NATURAL FINISH.

PIN:

300 SERIES STAINLESS STEEL, NATURAL FINISH.

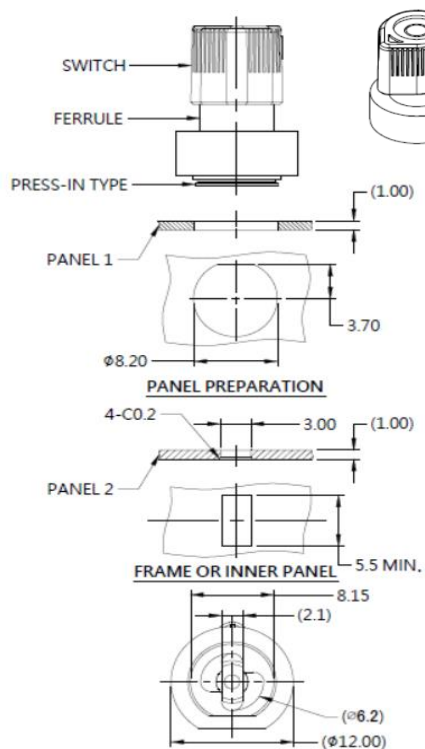
SPRING:

300 SERIES STAINLESS STEEL, NATURAL FINISH.

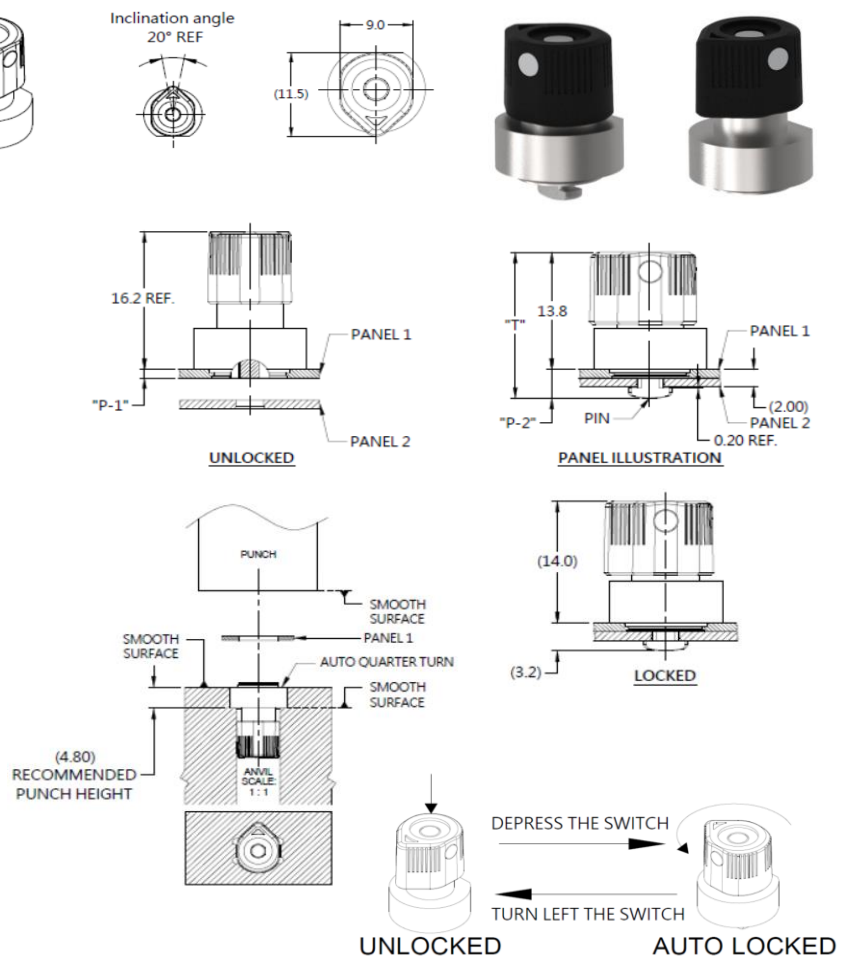
FERRULE:

300 SERIES STAINLESS STEEL, NATURAL FINISH.

■ Panel Preparation



■ Installation



■ Knob Color Options



■ Dimensions (mm)

| LENGTH "T" | PROJECTION | | PANEL THICKNESS | | DIMENSIONS | |
|---------------|------------|-------|-----------------|---------|------------|-------|
| | "P-1" | "P-2" | PANEL 1 | PANEL 2 | " L " | " B " |
| 17.2 | 1.0 | 3.4 | 1.0 | 1.0 | ~ | ~ |

Copyright© Since 2007-2019 Fivetech Technology Inc. All Right Reserved.

Auto Lock

- Panel head type design for intuitive handling.
- Simply press and turn 1/4 to lock/unlock, saving time and effort.
- Special torsion spring structure strengthens the force between two boards.
- The metal stop portion ferrule features a sturdy stop structure and high mechanical reliability.
- Wide range of applications, specs can be customized.

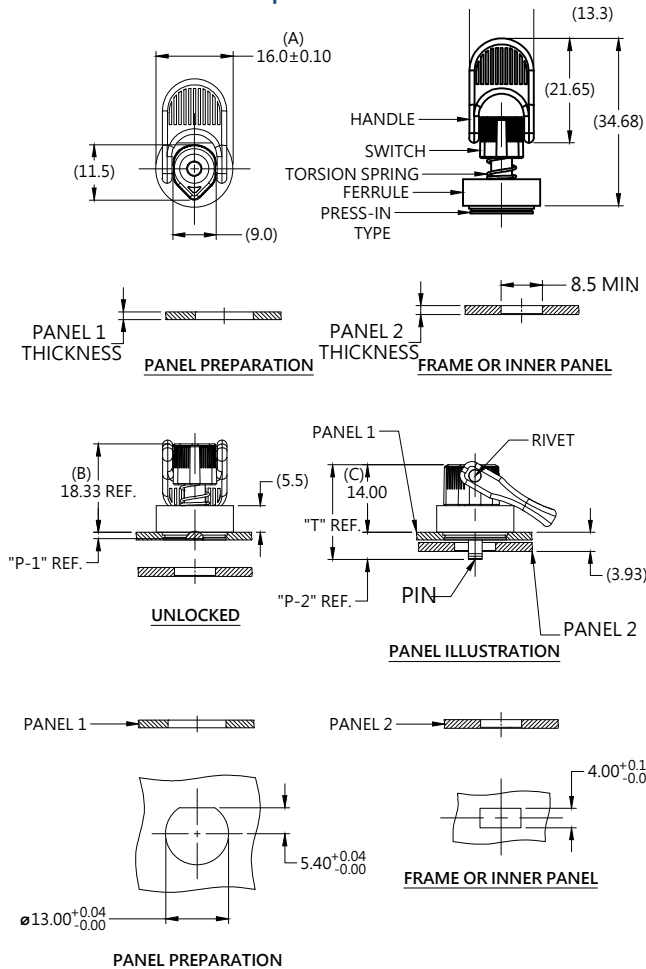
Auto Quarter Lock Patented.



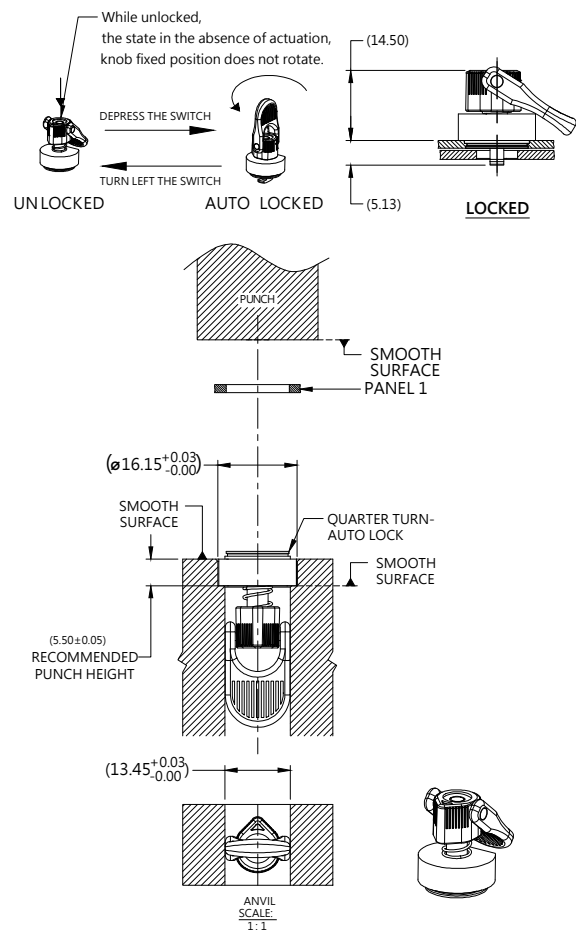
Material and Finish

HANDLE: PLASTIC, PANTONE 285C (BLUE).
 SWITCH: PLASTIC, PANTONE 285C (BLUE).
 RIVET: 300 SERIES STAINLESS STEEL, NATURAL FINISH.
 PIN: 300 SERIES STAINLESS STEEL, NATURAL FINISH.
 TORSION SPRING: 300 SERIES STAINLESS STEEL, NATURAL FINISH.
 FERRULE: 300 SERIES STAINLESS STEEL, NATURAL FINISH.

■ Panel Preparation



■ Installation and Projection



■ Dimensions (mm)

| LENGTH "T" | PROJECTION | | PANEL THICKNESS | | DIMENSIONS | |
|---------------|------------|-------|-----------------|---------|------------|-------|
| | "P-1" | "P-2" | PANEL 1 | PANEL 2 | " L " | " B " |
| 19.63 | 1.3 | 5.63 | 1.6 | 1.83 | ~ | ~ |

