

QUARTER TURN

- Water drop head type design makes the operation intuitive and friendly
- Turn 1/4 to unlock, and simply press to lock, saving time and effort
- High stability and high strength mechanism design
- Special spring force structure strengthens the force between two boards

Auto Lock Patented.



Material and Finish

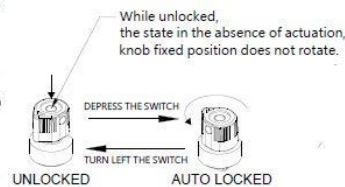
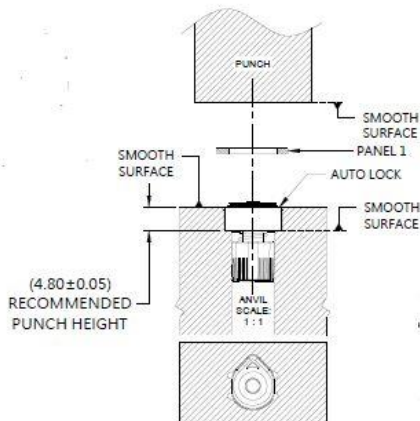
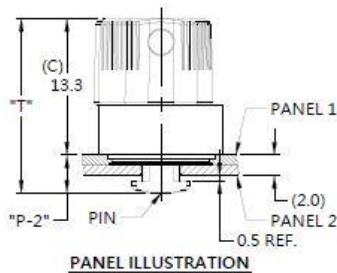
Switch :
Plastic

Rivet:
300 Series Stainless Steel, Natural Finish

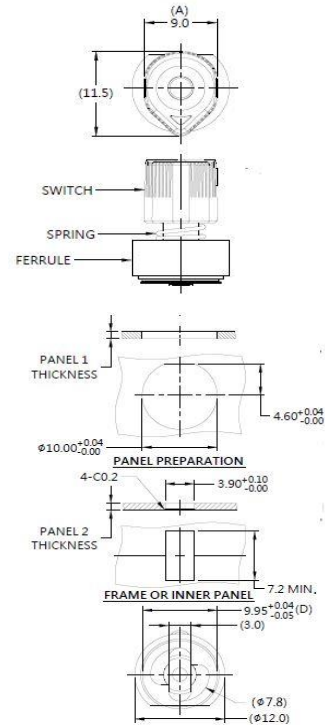
Pin :
300 Series Stainless Steel, Natural Finish

Spring/Ferrule :
300 Series Stainless Steel, Natural Finish

Installation



Panel Preparation



Dimensions (mm)

LENGTH "T"	PROJECTION		PANEL THICKNESS		DIMENSIONS	
	"P-1"	"P-2"	PANEL 1	PANEL 2	" L "	" B "
17.0	1.3	3.7	1.0	1.0	~	~

QUARTER TURN

- Water drop head type design makes the operation intuitive and friendly
- Turn 1/4 to unlock, and simply press to lock, saving time and effort
- High stability and high strength mechanism design
- Special spring force structure strengthens the force between two boards

Auto Lock- R Patented.



Material and Finish

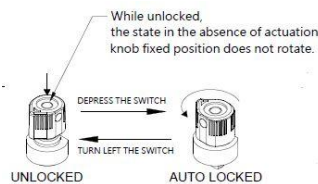
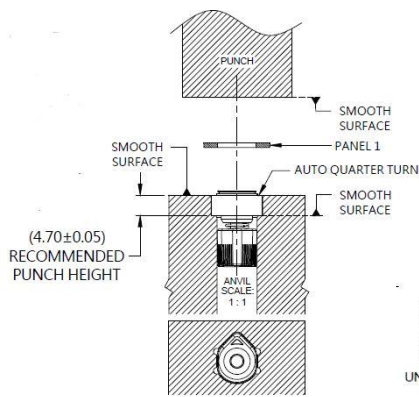
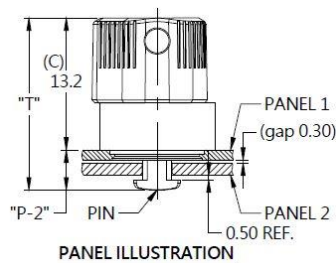
Switch :
Plastic

Rivet:
300 Series Stainless Steel, Natural Finish

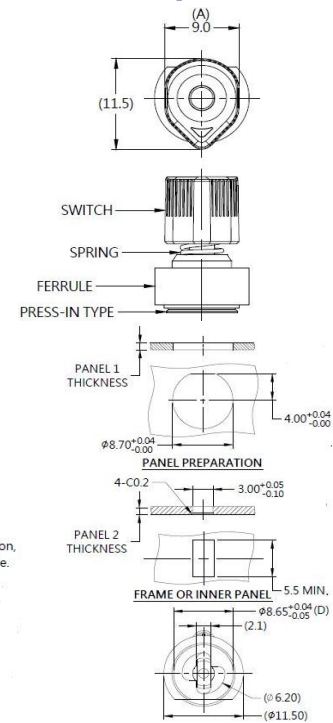
Pin :
300 Series Stainless Steel, Natural Finish

Spring/Ferrule :
300 Series Stainless Steel, Natural Finish

Installation



Panel Preparation



Dimensions (mm)

LENGTH "T"	PROJECTION		PANEL THICKNESS		DIMENSIONS	
	"P-1"	"P-2"	PANEL 1	PANEL 2	" L "	" B "
17.0	1.3	3.7	1.0	1.0	~	~

QUARTER TURN

- Water drop head type design makes the operation intuitive and friendly
- Turn 1/4 to unlock, and simply press to lock, saving time and effort
- High stability and high strength mechanism design
- Special spring force structure strengthens the force between two boards

Auto Lock- L Patented.



Material and Finish

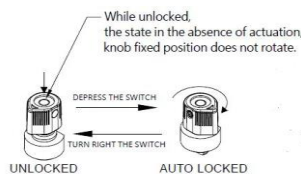
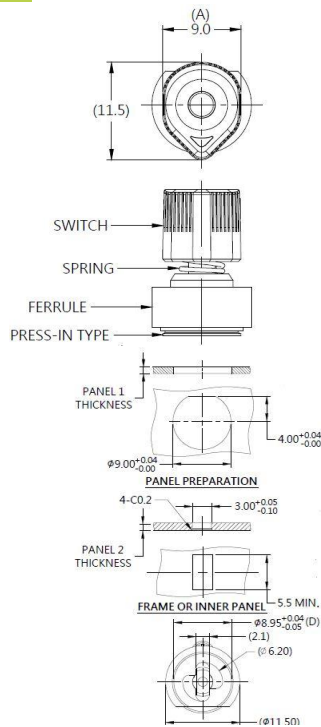
Switch :
Plastic

Rivet:
300 Series Stainless Steel, Natural Finish

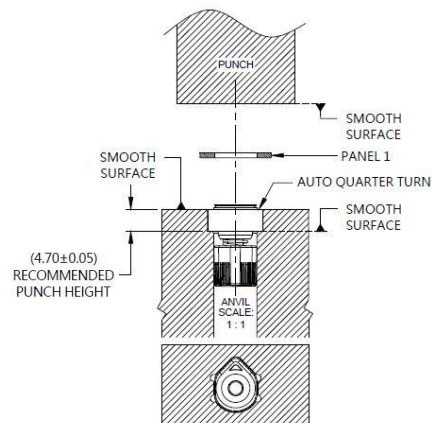
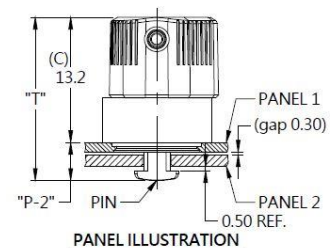
Pin :
300 Series Stainless Steel, Natural Finish

Spring/Ferrule :
300 Series Stainless Steel, Natural Finish

Installation



Panel Preparation



Dimensions (mm)

LENGTH "T"	PROJECTION		PANEL THICKNESS		DIMENSIONS	
	"P-1"	"P-2"	PANEL 1	PANEL 2	" L "	" B "
17.2	1.0	4.0	1.0	1.2	~	~

QUARTER TURN

- Water drop head type design makes the operation intuitive and friendly
- Turn 1/4 to unlock, and simply press to lock, saving time and effort
- High stability and high strength mechanism design
- Special spring force structure strengthens the force between two boards

Auto Lock Patented.



Material and Finish

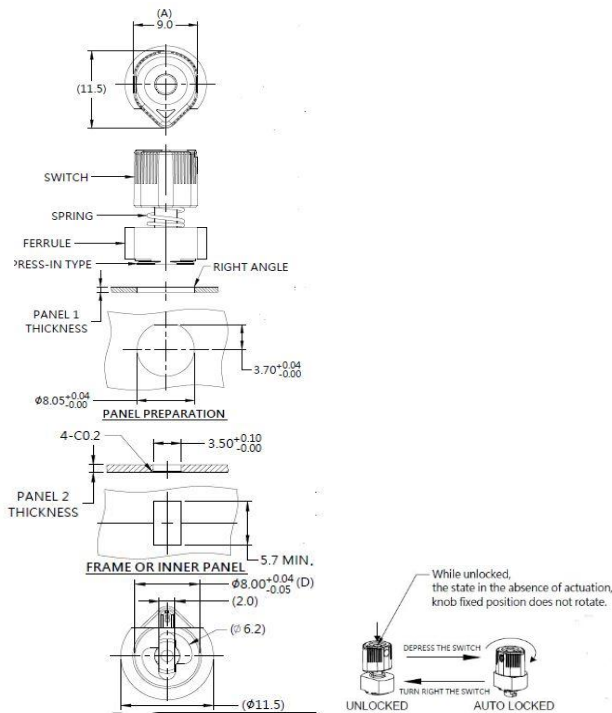
Switch :
Plastic

Rivet:
300 Series Stainless Steel, Natural Finish

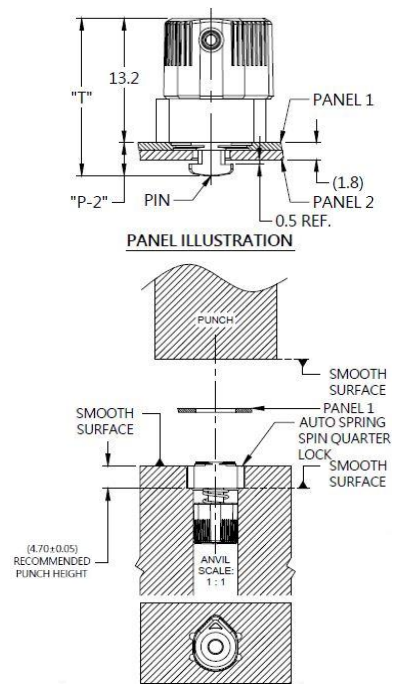
Pin :
300 Series Stainless Steel, Natural Finish

Spring/Ferrule :
300 Series Stainless Steel, Natural Finish

Installation



Panel Preparation



Dimensions (mm)

LENGTH "T"	PROJECTION		PANEL THICKNESS		DIMENSIONS	
	"P-1"	"P-2"	PANEL 1	PANEL 2	" L "	" B "
16.7	0.5	3.5	0.8	1.0	~	~

QUARTER-TURN SERIES

- AUTO-LOCK QUARTER-TURN II** (half-wing type) Patented.



Material and Finish

SWITCH:
PLASTIC, PANTONE: BLACK.

RIVET:
300 SERIES STAINLESS STEEL, NATURAL FINISH.

PIN:
300 SERIES STAINLESS STEEL, NATURAL FINISH.

SPRING:
300 SERIES STAINLESS STEEL, NATURAL FINISH.

FERRULE:
300 SERIES STAINLESS STEEL, NATURAL FINISH.

Material and Finish

SWITCH:
PLASTIC, PANTONE: BLACK.

RIVET:
300 SERIES STAINLESS STEEL, NATURAL FINISH.

PIN:
300 SERIES STAINLESS STEEL, NATURAL FINISH.

SPRING:
300 SERIES STAINLESS STEEL, NATURAL FINISH.

FERRULE:
300 SERIES STAINLESS STEEL, NATURAL FINISH.

Material and Finish

SWITCH:
PLASTIC, PANTONE: BLACK.

RIVET:
300 SERIES STAINLESS STEEL, NATURAL FINISH.

PIN:
300 SERIES STAINLESS STEEL, NATURAL FINISH.

SPRING:
300 SERIES STAINLESS STEEL, NATURAL FINISH.

FERRULE:
300 SERIES STAINLESS STEEL, NATURAL FINISH.

Material and Finish

SWITCH:
PLASTIC, PANTONE: BLACK.

RIVET:
300 SERIES STAINLESS STEEL, NATURAL FINISH.

PIN:
300 SERIES STAINLESS STEEL, NATURAL FINISH.

SPRING:
300 SERIES STAINLESS STEEL, NATURAL FINISH.

FERRULE:
300 SERIES STAINLESS STEEL, NATURAL FINISH.

Material and Finish

SWITCH:
PLASTIC, PANTONE: BLACK.

RIVET:
300 SERIES STAINLESS STEEL, NATURAL FINISH.

PIN:
300 SERIES STAINLESS STEEL, NATURAL FINISH.

SPRING:
300 SERIES STAINLESS STEEL, NATURAL FINISH.

FERRULE:
300 SERIES STAINLESS STEEL, NATURAL FINISH.

Material and Finish

SWITCH:
PLASTIC, PANTONE: BLACK.

RIVET:
300 SERIES STAINLESS STEEL, NATURAL FINISH.

PIN:
300 SERIES STAINLESS STEEL, NATURAL FINISH.

SPRING:
300 SERIES STAINLESS STEEL, NATURAL FINISH.

FERRULE:
300 SERIES STAINLESS STEEL, NATURAL FINISH.

Material and Finish

SWITCH:
PLASTIC, PANTONE: BLACK.

RIVET:
300 SERIES STAINLESS STEEL, NATURAL FINISH.

PIN:
300 SERIES STAINLESS STEEL, NATURAL FINISH.

SPRING:
300 SERIES STAINLESS STEEL, NATURAL FINISH.

FERRULE:
300 SERIES STAINLESS STEEL, NATURAL FINISH.

Material and Finish

SWITCH:
PLASTIC, PANTONE: BLACK.

RIVET:
300 SERIES STAINLESS STEEL, NATURAL FINISH.

PIN:
300 SERIES STAINLESS STEEL, NATURAL FINISH.

SPRING:
300 SERIES STAINLESS STEEL, NATURAL FINISH.

FERRULE:
300 SERIES STAINLESS STEEL, NATURAL FINISH.

Material and Finish

SWITCH:
PLASTIC, PANTONE: BLACK.

RIVET:
300 SERIES STAINLESS STEEL, NATURAL FINISH.

PIN:
300 SERIES STAINLESS STEEL, NATURAL FINISH.

SPRING:
300 SERIES STAINLESS STEEL, NATURAL FINISH.

FERRULE:
300 SERIES STAINLESS STEEL, NATURAL FINISH.

Material and Finish

SWITCH:
PLASTIC, PANTONE: BLACK.

RIVET:
300 SERIES STAINLESS STEEL, NATURAL FINISH.

PIN:
300 SERIES STAINLESS STEEL, NATURAL FINISH.

SPRING:
300 SERIES STAINLESS STEEL, NATURAL FINISH.

FERRULE:
300 SERIES STAINLESS STEEL, NATURAL FINISH.

Material and Finish

SWITCH:
PLASTIC, PANTONE: BLACK.

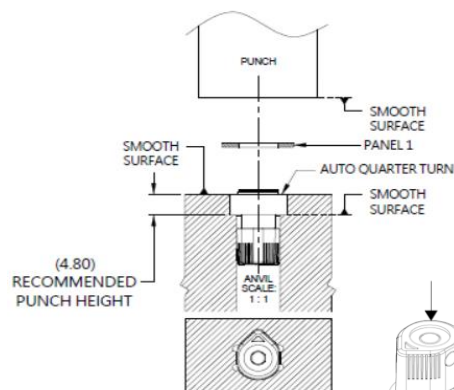
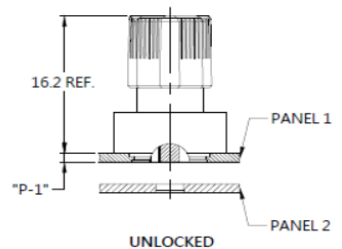
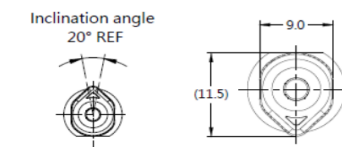
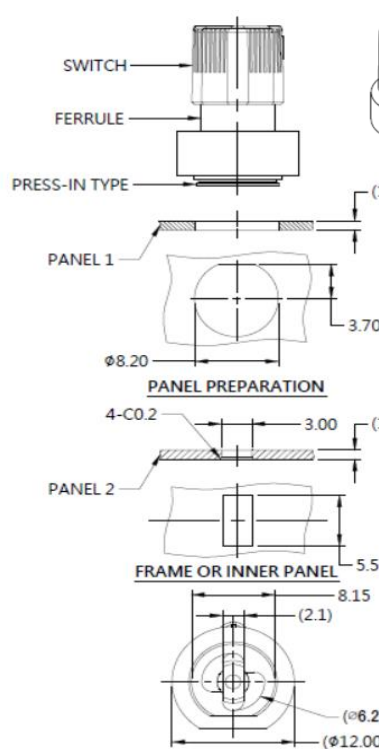
RIVET:
300 SERIES STAINLESS STEEL, NATURAL FINISH.

PIN:
300 SERIES STAINLESS STEEL, NATURAL FINISH.

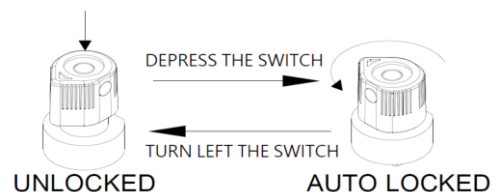
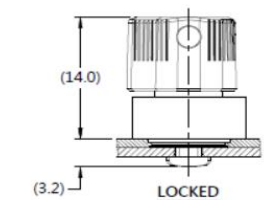
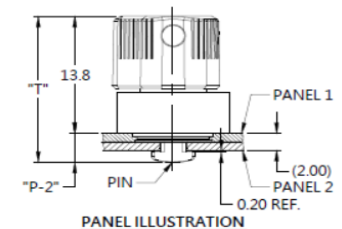
SPRING:
300 SERIES STAINLESS STEEL, NATURAL FINISH.

FERRULE:
300 SERIES STAINLESS STEEL, NATURAL FINISH.

■ Panel Preparation



■ Installation



■ Knob Color Options



■ Dimensions (mm)

LENGTH "T"	PROJECTION		PANEL THICKNESS		DIMENSIONS	
	"P-1"	"P-2"	PANEL 1	PANEL 2	" L "	" B "
17.2	1.0	3.4	1.0	1.0	~	~

Copyright© Since 2007-2019 Fivetech Technology Inc. All Right Reserved.

Auto Lock

- Panel head type design for intuitive handling.
- Simply press and turn 1/4 to lock/unlock, saving time and effort.
- Special torsion spring structure strengthens the force between two boards.
- The metal stop portion ferrule features a sturdy stop structure and high mechanical reliability.
- Wide range of applications, specs can be customized.

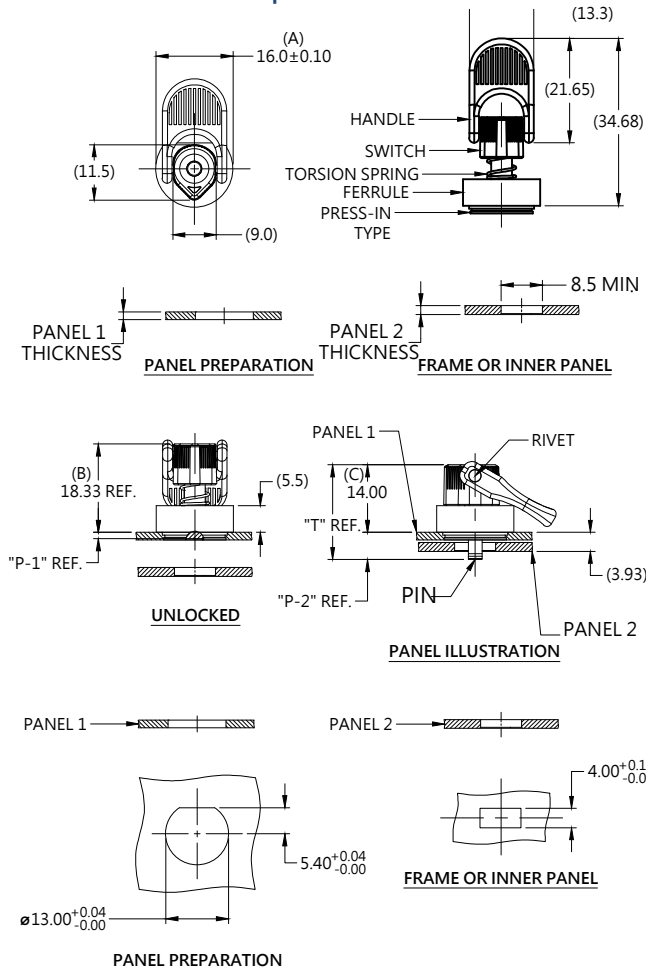
Auto Quarter Lock Patented.



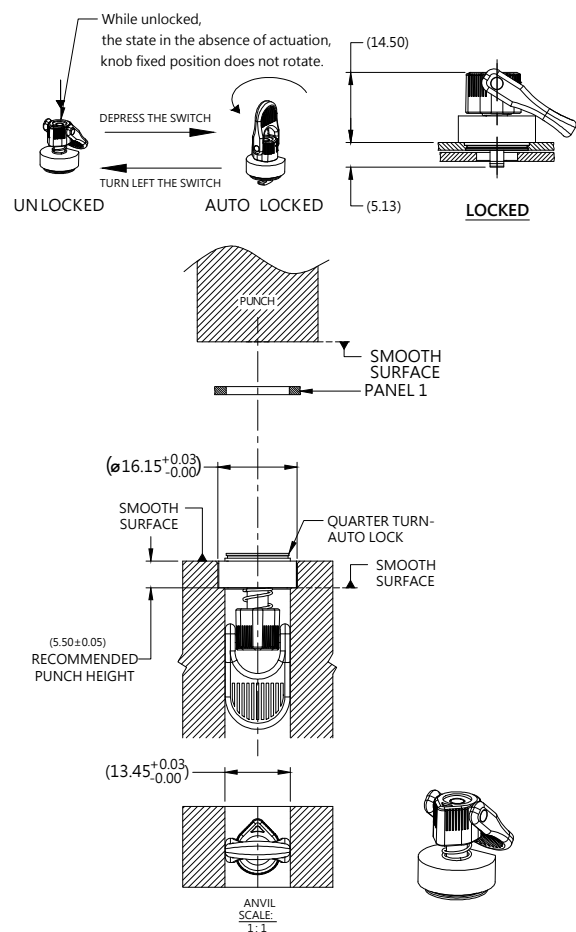
Material and Finish

HANDLE: PLASTIC, PANTONE 285C (BLUE).
 SWITCH: PLASTIC, PANTONE 285C (BLUE).
 RIVET: 300 SERIES STAINLESS STEEL, NATURAL FINISH.
 PIN: 300 SERIES STAINLESS STEEL, NATURAL FINISH.
 TORSION SPRING: 300 SERIES STAINLESS STEEL, NATURAL FINISH.
 FERRULE: 300 SERIES STAINLESS STEEL, NATURAL FINISH.

■ Panel Preparation



■ Installation and Projection



■ Dimensions (mm)

LENGTH "T"	PROJECTION		PANEL THICKNESS		DIMENSIONS	
	"P-1"	"P-2"	PANEL 1	PANEL 2	" L "	" B "
19.63	1.3	5.63	1.6	1.83	~	~