

ANGLE SERIES

- Innovative angled fastening function
- Designed for flexible angle installing directions
- Offers diverse locking angles for chassis designs
- Fast positioning tool-less design increases operating convenience

ANGLE Captive Screw Patented.



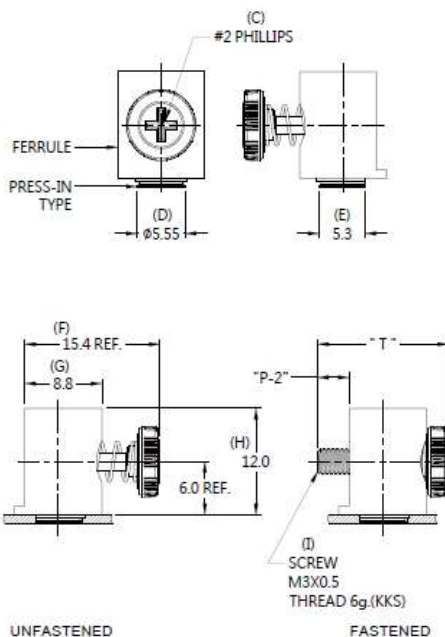
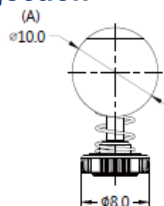
Material and Finish

Screw :
Carbon Steel, Zinc Finish. Plastic

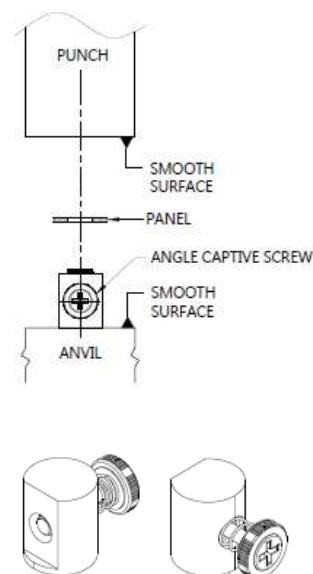
Spring :
300 Series Stainless Steel, Natural Finish

Ferrule :
Carbon Steel, Zinc Finish

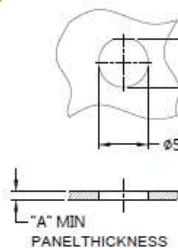
Projection



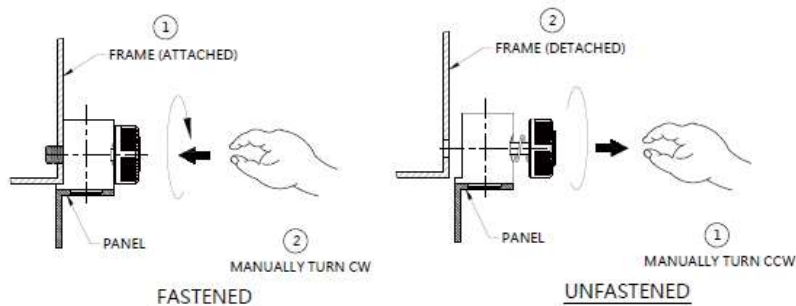
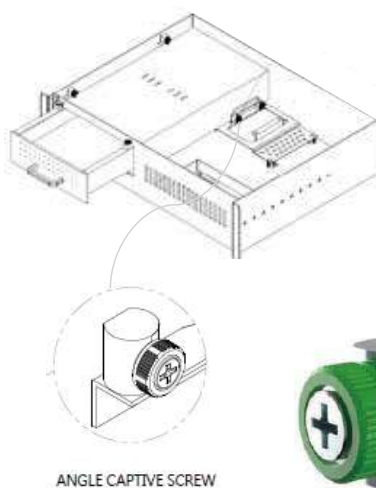
Installation



Panel Preparation



Application



Dimensions (mm)

SCREW LENGTH "T"	SCREW PROJECTION		PANEL THICKNESS		DIMENSINOS	
	P-1	P-2	"A" MIN	"A" MAX	"L"	"B"
14.9	~	3.6	1.0	~	~	~

- Innovative angled fastening function
- Designed for flexible angle installing directions
- Offers diverse applications for chassis designs
- With tool design especially designed for security purposes
- Small and compact contributes to limited spaces

ANGLE SCREW Patented.



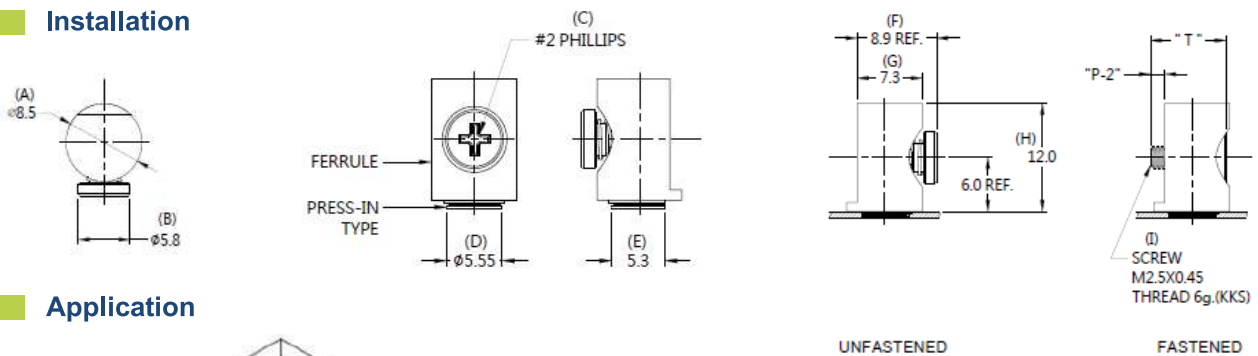
Material and Finish

Screw :
Carbon Steel, Nickel Finish

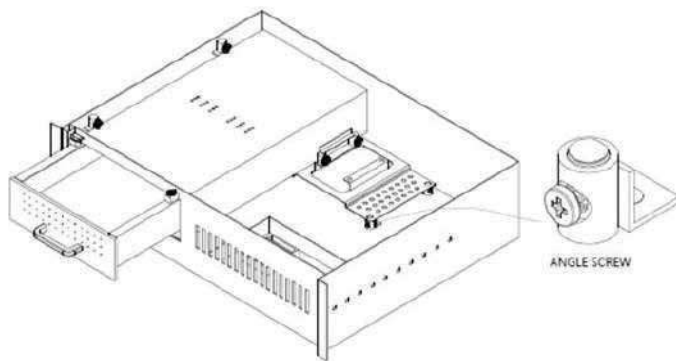
Spring :
300 Series Stainless Steel, Natural Finish.

Ferrule :
Carbon Steel, Zinc Finish

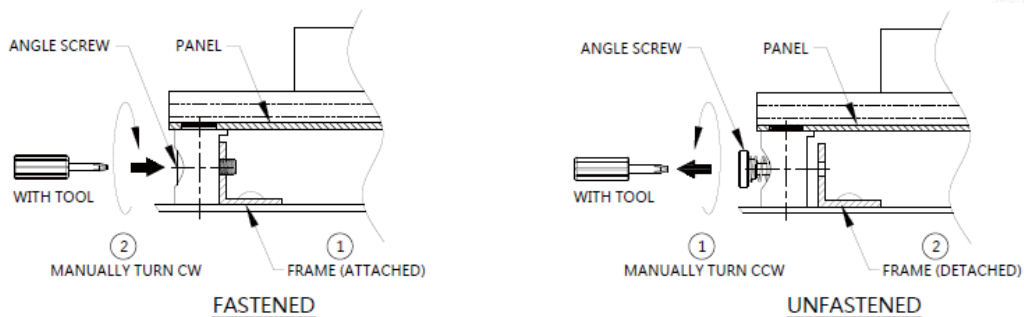
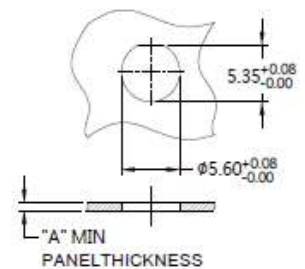
Installation



Application



Panel Preparation



Dimensions (mm)

SCREW LENGTH "T"	SCREW PROJECTION		PANEL THICKNESS		DIMENSINOS	
	P-1	P-2	"A" MIN	"A" MAX	" L "	" B "
8.5	~	16	0.8	~	~	~