

## ANGLE SERIES

- Innovative angled fastening function
- Designed for flexible angle installing directions
- Offers diverse locking angles for chassis designs
- Plunger design offers tool-less, quick assembly, efficient in performance

### ANGLE PLUNGER Patented.



### Material and Finish

#### Knob:

Carbon Steel, Zinc Finish. Plastic.

#### Pin:

Carbon Steel, Zinc Finish

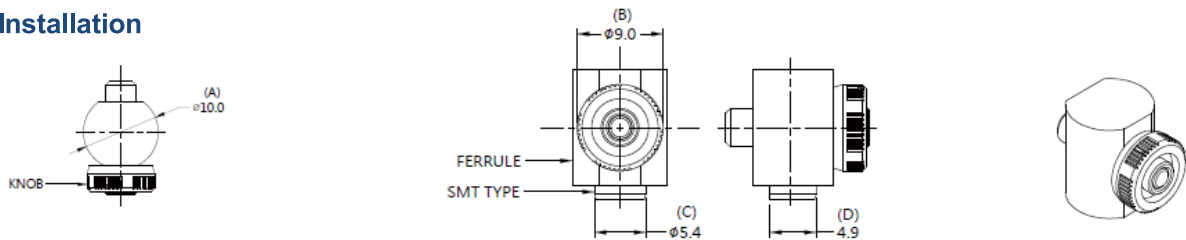
#### Spring :

300 Series Stainless Steel, Natural Finish

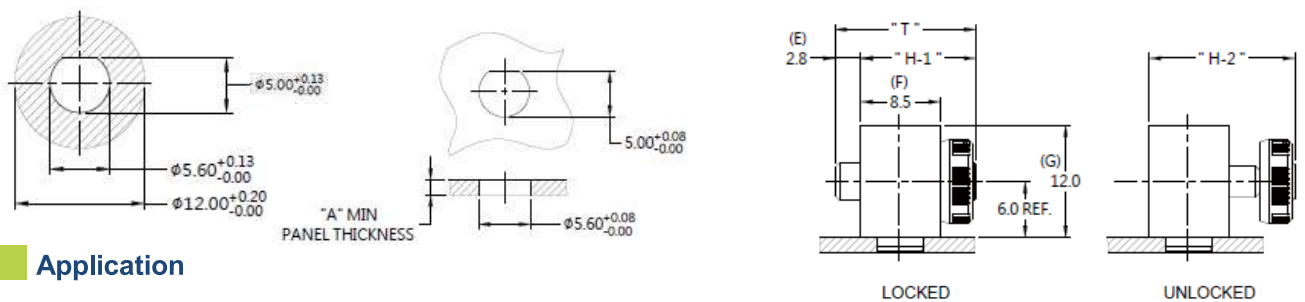
#### Ferrule:

Carbon Steel, Tin Finish

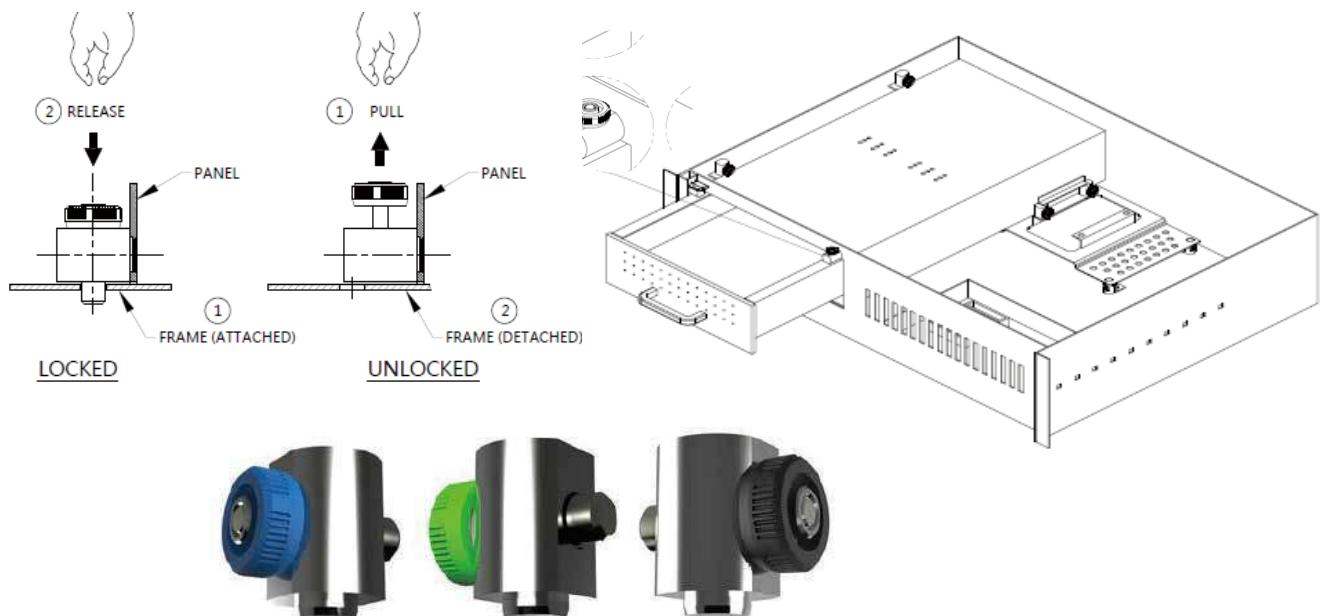
### Installation



### Panel Preparation



### Application



### Dimensions (mm)

PIN LENGTH "T"	PIN PROJECTION		PANEL THICKNESS		DIMENSINOS	
	H-1	H-2	"A" MIN	"A" MAX	"L"	"B"
15.1	12.3	15.6	1.6	~	~	~

## ANGLE SERIES

- Innovative angled fastening function
- Designed for flexible angle installing directions
- Offers diverse locking angles for chassis designs
- Latch plunger offers tool-less, quick assembly, efficient in performance
- Hand pull 90° to achieve quick positioning

### ANGLE LATCH PLUNGER Patented.



### Material and Finish

**Wrench :**  
Plastic

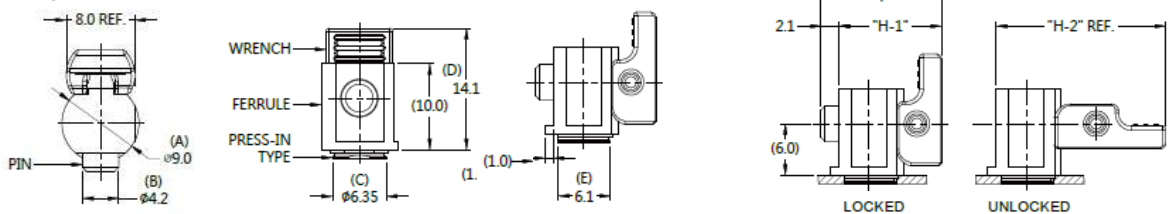
**Rivet :**  
300 Series Stainless Steel, Natural Finish

**Pin :**  
Carbon Steel, Zinc Finish

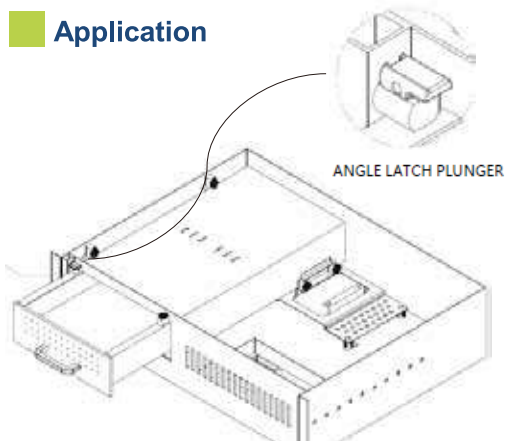
**Spring :**  
Carbon Steel, Tin Finish

**Ferrule :**  
Carbon Steel, Zinc Finish

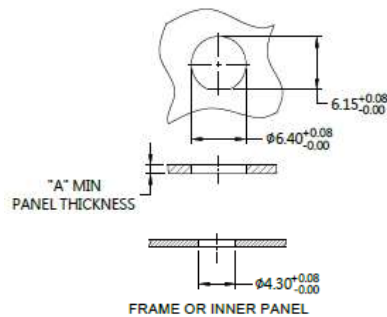
### Projection



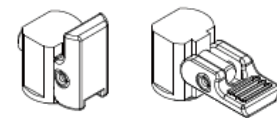
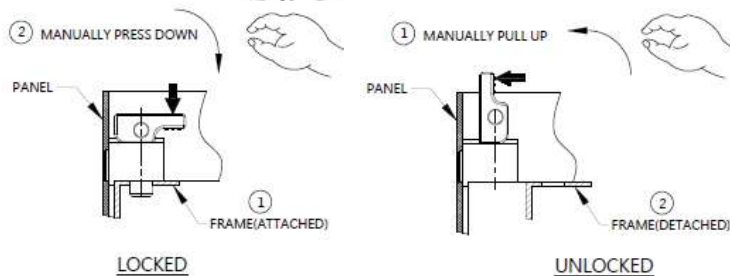
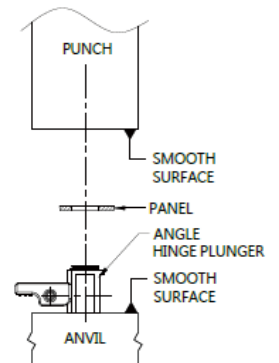
### Application



### Panel Preparation



### Installation



### Dimensions (mm)

SCREW LENGTH "T"	SCREW PROJECTION		PANEL THICKNESS		DIMENSINOS	
	"H-1"	"H-2"	"A" MIN	"A" MAX	"L "	" B "
14.1	12.0	19.8	1.0	~	~	~

- Automatic hold the top cover for smoother operation
- Cushion the downward force of top cover pressing down
- Laterally installed on both sides of the chassis to save space
- Automatic equipment assembly, with high reliability
- Customization available, the color can be adjusted according to the corporate identity color

## Auto Angle Strut Patented.



### Material and Finish

#### Knob :

6000 Series Aluminum, Natural Finish

#### Pin :

Carbon Steel, Zinc Finish

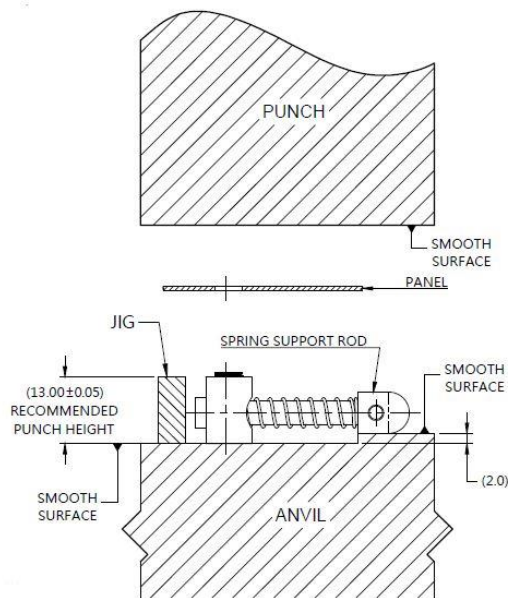
#### Ferrule :

Carbon Steel, Zinc Finish

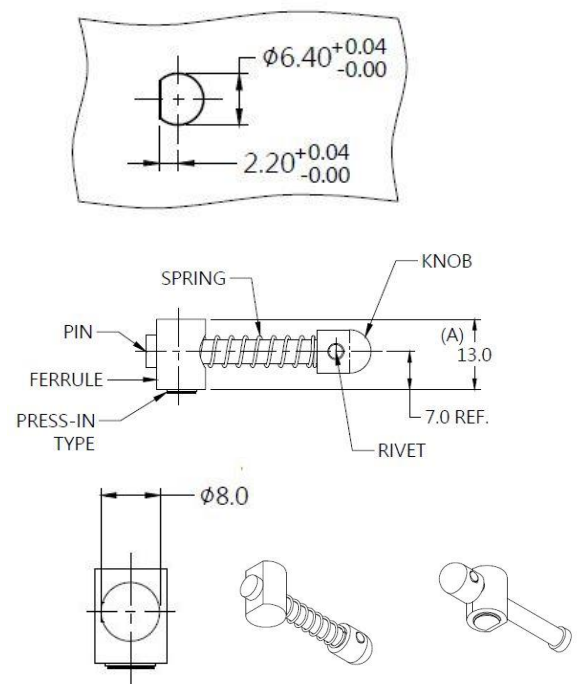
#### Rivet/Spring :

300 Series Stainless Steel, Natural Finish.

### Installation



### Panel Preparation



### Dimensions (mm)

SCREW LENGTH "T"	SCREW PROJECTION		PANEL THICKNESS		DIMENSINOS	
	"P-1"	"P-2"	"A" MIN	"A" MAX	" L "	" B "
41.6		22.6	0.8	~		