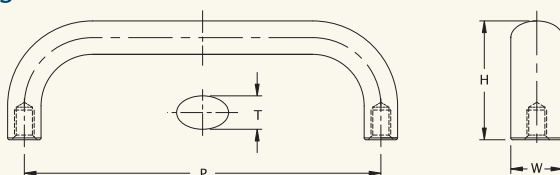


- Metal handle can enhance the appearance
- Materials, and size, could be customized

6R, 60 SERIES



■ 6R SERIES



Material and Finish

Material:
6000 series aluminum.

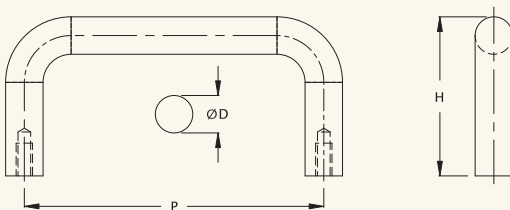
Finish:
Anodize black or clear.

Special versions:
Customer requested of design.

mm

Dimensions				Part Number					
P	H	T	W	Color	6-32	M4	8-32	M5	10-32
76.2	25.4	7.1	11.1	Black	6R-72076-4	6R-72076-5	6R-72076-6	-	-
				Clear	6R-73076-4	6R-73076-5	6R-73076-6	-	-

■ 60 SERIES



mm

Dimensions			Part Number					
ØD	P	H	M3	6-32	M4	8-32	M5	10-32
6.0	30.0	20.2	60-60030-1S	60-60030-4S	60-80030-5S	60-80030-6S	-	-
6.35	64.0	26.0	60-60064-1	60-60064-4	60-60064-5	60-60064-6	-	-
8.0	30.0	31.0	-	60-80030-4	60-80030-5	60-80030-6	60-80030-7	60-80030-8
	50.0	28.0	-	60-80050-4	60-80050-5	60-80050-6	60-80050-7	60-80050-8

Material and Finish

Material:
Low carbon steel

Finish:
Nickel plated

Special versions:
Customer requested of design.

mm

Dimensions			Part Number						
ØD	P	H	Color	M3	6-32	M4	8-32	M5	10-32
6.35	64.0	26.0	Black	60-62064-1	60-62064-4	-	-	-	-
			Clear	60-63064-1	60-63064-4	-	-	-	-
8.0	30.0	31.0	Black	60-82030-1	60-82030-4	60-82030-5	-	-	-
			Clear	60-83030-1	60-83030-4	60-83030-5	-	-	-
10.0	96.0	35.0	Black	-	-	60-12096-5	60-12096-6	60-12096-7	60-12096-8
			Clear	-	-	60-13096-5	60-13096-6	60-13096-7	60-13096-8

Material and Finish

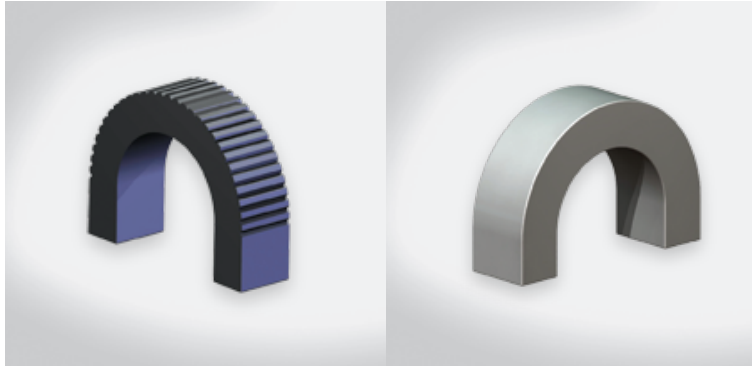
Material:
6000 series aluminum.

Finish:
Anodize black or clear.

Special versions:
Customer requested of design.

- Metal handle can enhance the appearance
- Materials, size, and assembly method could be customized

66, 67 SERIES



Material and Finish

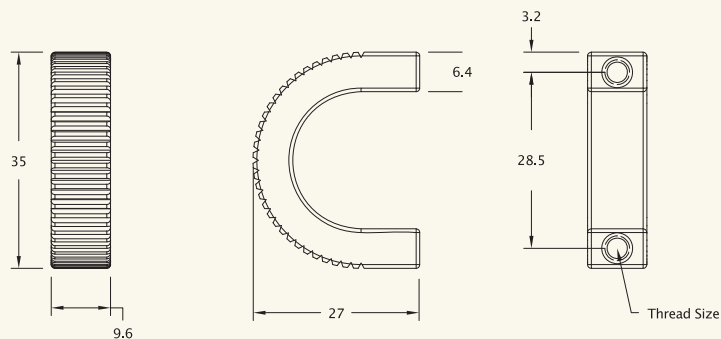
Material:
6000 series aluminum.

Finish:
Anodize black or clear.

Installation:
Screw length=Thickness of panel plus 8.0.

Special versions:
Customer requested of design.

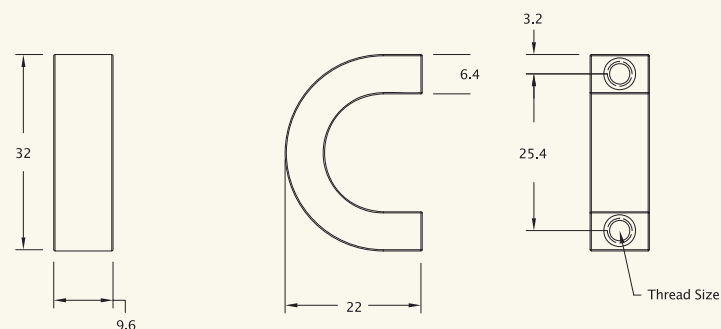
■ 66 SERIES



mm

Part Number				
Finish	M3	6-32	M4	8-32
Black	66-72028-1	66-72028-4	66-72028-5	66-72028-6
Clear	66-73028-1	66-73028-4	66-73028-5	66-73028-6

■ 67 SERIES

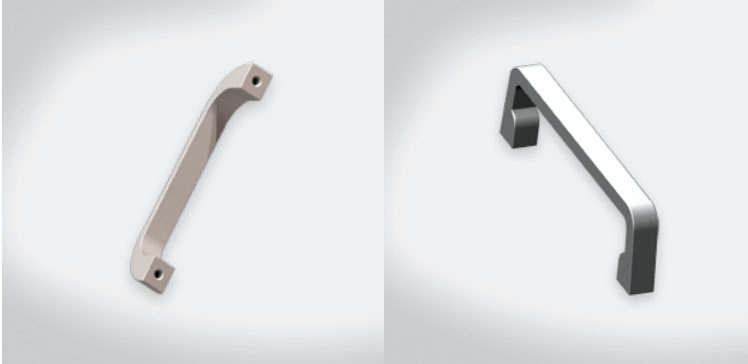


mm

Part Number				
Finish	M3	6-32	M4	8-32
Black	67-72028-1	67-72028-4	67-72028-5	67-72028-6
Clear	67-73028-1	67-73028-4	67-73028-5	67-73028-6

- Metal handle can enhance the appearance
- Suit for 5U chassis applications

68, 69 SERIES



Material and Finish

Material:

6063 aluminum.

Finish:

Anodize black or clear.

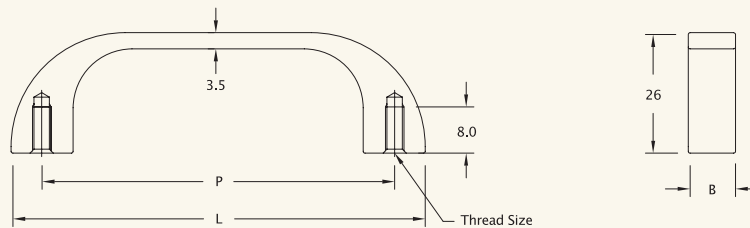
Installation:

Screw length=Thickness of panel plus 8.0.

Special versions:

Customer requested of design.

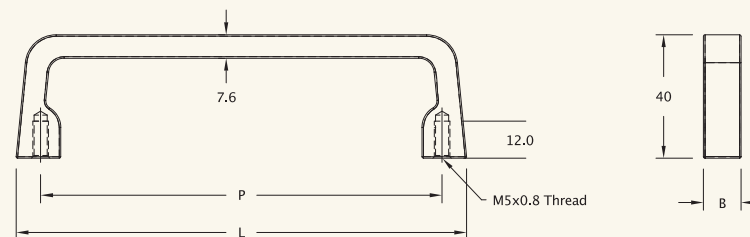
68 SERIES



mm

Finish	P	L	B	Part Number			
				M4	8-32	M5	10-32
Black Clear	43.2	55.9	10.2	68-72043-5	68-72043-6	68-72043-7	68-72043-8
				68-73043-5	68-73043-6	68-73043-7	68-73043-8
Black Clear	76.2	88.9	10.2	68-72076-5	68-72076-6	68-72076-7	68-72076-8
				68-73076-5	68-73076-6	68-73076-7	68-73076-8
Black Clear	101.6	114.3	12	68-72101-5	68-72101-6	68-72101-7	68-72101-8
				68-73101-5	68-73101-6	68-73101-7	68-73101-8

69 SERIES



mm

Finish	P	L	B	Part Number			
				M4	8-32	M5	10-32
Black Clear	130	146	12.2	69-72130-5	69-72130-6	69-72130-7	69-72130-8
				69-73130-5	69-73130-6	69-73130-7	69-73130-8

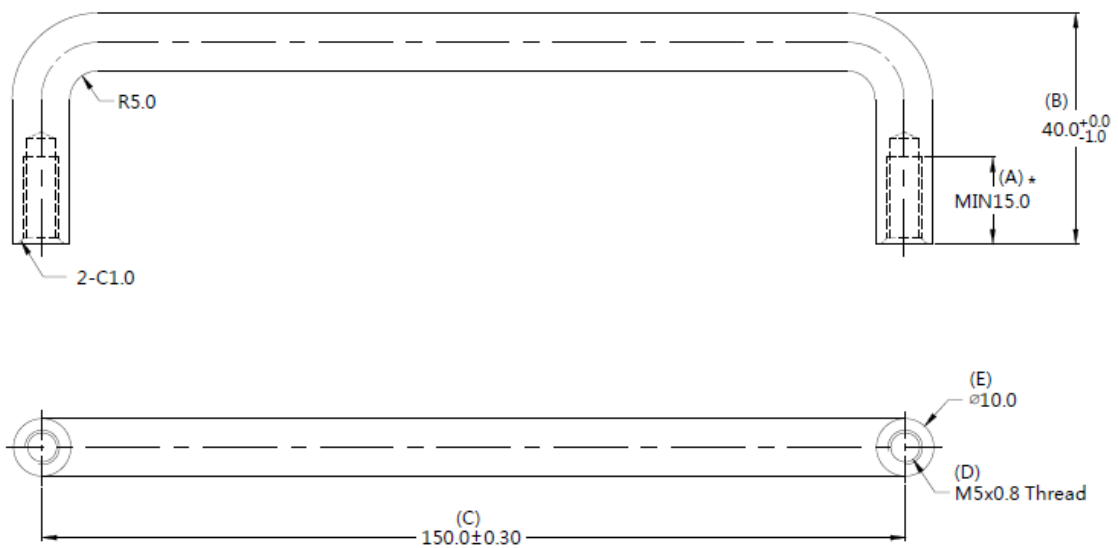
Handle

- Standard sizes for use as rack server handles
- Multiple design satisfy all functionality requirements
- Metal handle can enhance the appearance
- Materials, and size, could be customized

60 Series - 15cm Pitch (5.9") Patented.

Material and Finish

Handle :
Carbon Steel, Nickel Finish.



■ Dimensions (mm)

A [□]	B [□]	C [□]	D [□]	ØE [□]
15.0 [□]	40.0 [□]	150.0 [□]	M5 [□]	10.0 [□]