

SMT FASTENER SCREW

- Material of plastic knob can sustain high temperature on SMT process.
- Production follows the standard SMT process.
- Color management is available as required by customers.
- Functional device which prevents thread damage caused by the inflow of tin in SMT process.

19 Series SMT Fastener Screw -Smooth Knob, ϕ 10mm Patented.



Material and Finish

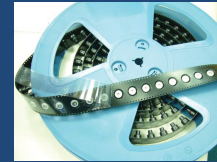
KNOB: PLASTIC, (BLUE), (Smooth Knob)

SCREW: CARBON STEEL, ZINC FINISH.

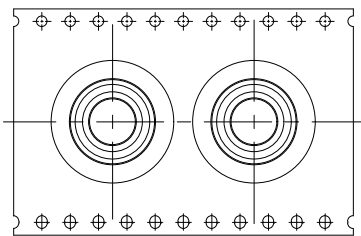
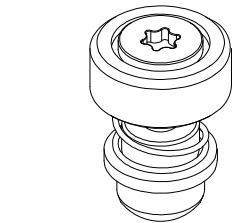
SPRING: 300 SERIES STAINLESS STEEL, NATURAL FINISH.

FERRULE: CARBON STEEL, TIN FINISH.

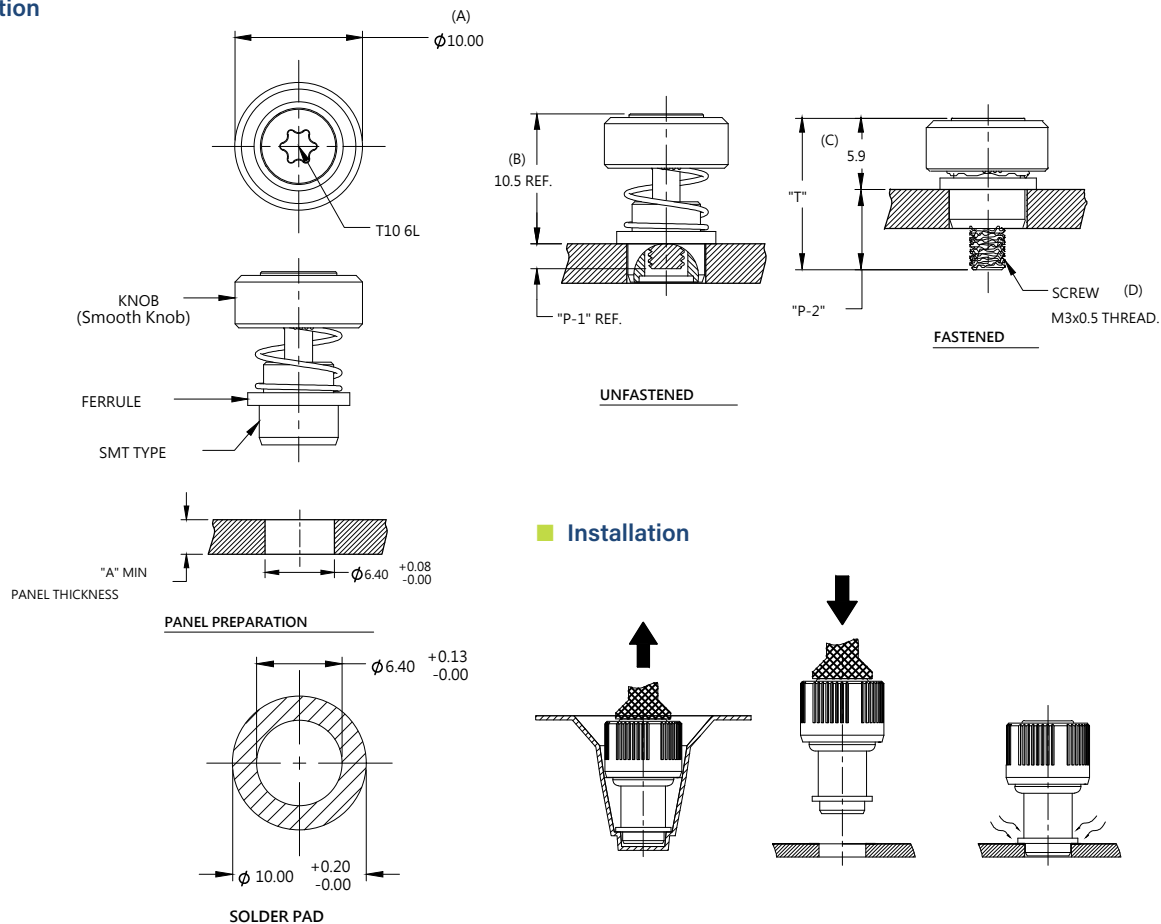
Reel



Panel Preparation



REEL SCHEMATIC



Dimensions (mm)

LENGTH "T"	PROJECTION		PANEL THICKNESS		DIMENSIONS	
	"P-1"	"P-2"	"A"MIN	"A"MAX	" L "	" B "
12.5	2.0	6.6	3.2	~	~	~