

SMT FASTENER SCREW

Material of plastic knob can sustain high temperature on SMT process.

Production follows the standard SMT process.

Color management is available as required by customers.

Functional device which prevents thread damage caused by the inflow of tin in SMT process.

19 Series SMT Fastener Screw -Knurled Knob, $\phi 7\text{mm}$ Patented.



Material and Finish

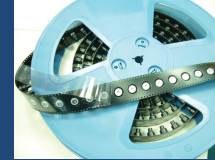
KNOB: PLASTIC, (BLUE), (Knurled Knob)

SCREW: CARBON STEEL, ZINC FINISH.

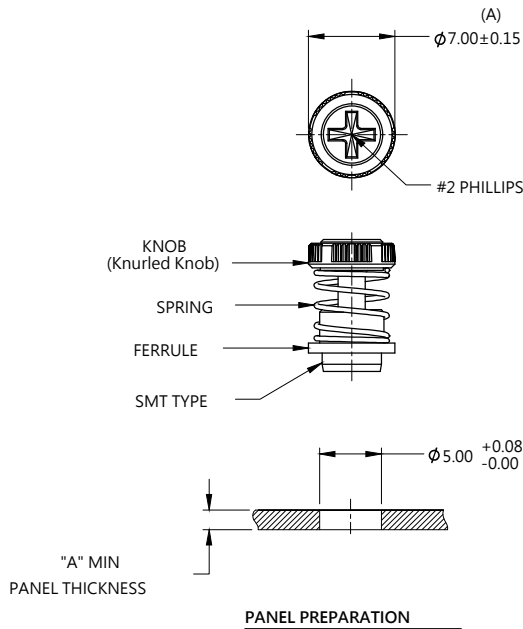
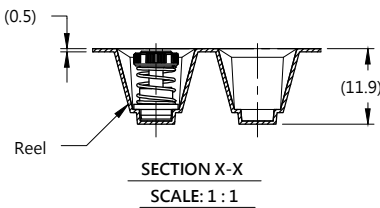
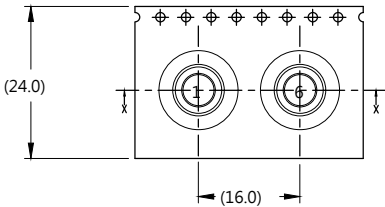
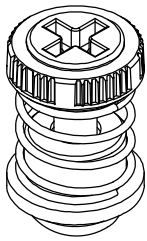
SPRING: 300 SERIES STAINLESS STEEL, NATURAL FINISH.

FERRULE: CARBON STEEL, TIN FINISH.

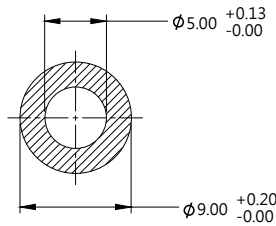
Reel



Panel Preparation

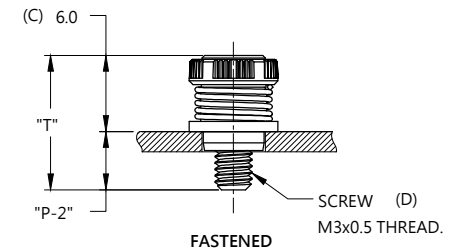
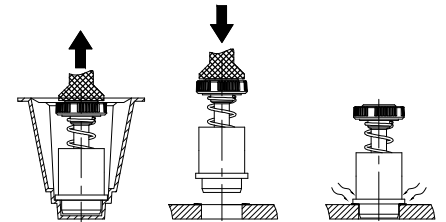


PANEL PREPARATION

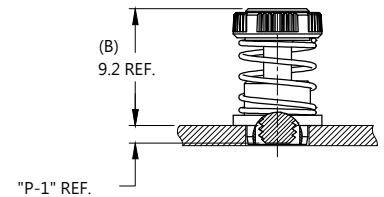


SOLDER PAD

Installation



FASTENED



UNFASTENED

Dimensions (mm)

LENGTH "T"	PROJECTION		PANEL THICKNESS		DIMENSIONS	
	"P-1"	"P-2"	"A"MIN	"A"MAX	" L "	" B "
10.6	1.4	4.6	1.6	~	~	~